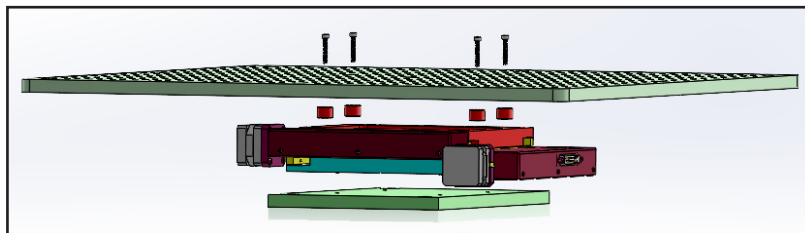
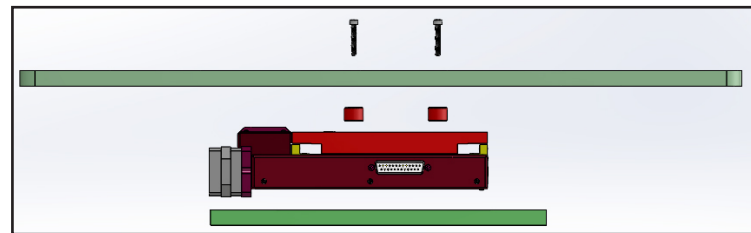


HT11300KTNL

HEAVY DUTY XY TRANSLATION STAGE



ISOMETRIC VIEW



SIDE VIEW

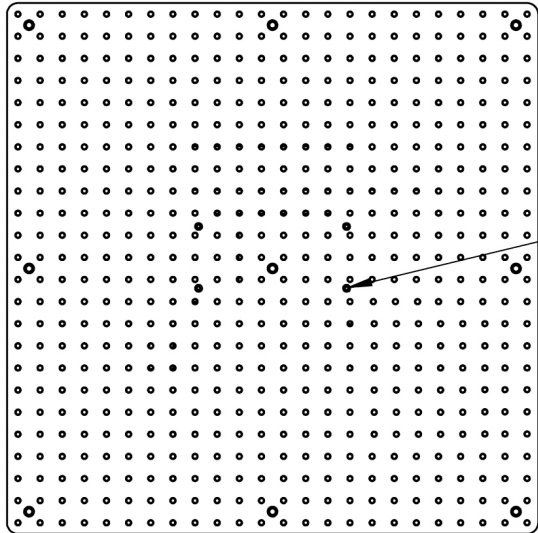
The HT11300KTNL motorized stepper stage from Prior Scientific is ideal for automating the XY scanning of larger samples used in electrophysiology, multiphoton and industrial applications. With a robust heavy duty frame, the stage is capable of handling point loads up to 100kg and has a large travel range of 108mm x 108mm. The HT11300KTNL has an excellent resolution of 20nm when paired with Prior's ProScan III controller. Easily adapted to existing tables, the stage can be used with 1/4-20 and M6 breadboards making it a truly versatile platform for those heavy duty applications.

Key Features

- Able to withstand point loads of up to 100kg without damage.
- Compatible with Prior controller options. Controlled via a joystick, USB, RS232 or TTL commands.
- Full DLL/SDK available for use with OEM software integrations.
- Excellent resolution of 20nm, when used with a controller from Prior Scientific.
- Large range of travel (108mm x 108mm).
- Manufactured with precision bearings and drive screws.
- Extremely versatile and low profile, can be used with both 1/4-20 and M6 breadboards.
- Heavy duty translation stage with 600mm x 600mm M6 tapped breadboard top plate.
- Compatible with Neurotar's Mobile HomeCage[®] Large.

Technical Information

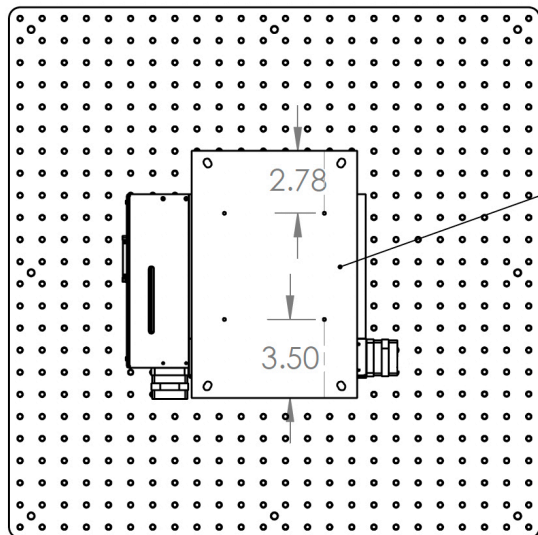
Top View



600 X 600 BREADBOARD PLATE

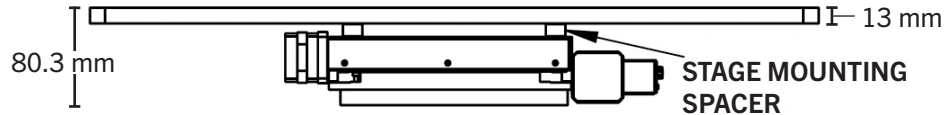
8-32 X 1INCH SOCKET HEAD SCREW

Bottom View



MOUNTING PLATE (MOUNTS STAGE TO OPTICAL TABLE)

Side View



HT11300KTNL Specifications*:

Feature	Specification
Travel Range	108mm x 108mm
Minimum Step Size (Resolution)	0.02 μ m
Load Capacity	100kg point load
Stepper Motor	2 phase bipolar, 1 amp per phase microstepping
Limit Switches	X and Y standard
Stage Profile	Approx. 600mm with solid plate installed

* Specifications valid only if used with a Prior controller; and based upon the Prior method of testing.

UNITED KINGDOM

Prior Scientific Instruments Ltd.
Units 3-4 Fielding Industrial Estate
Wilbraham Road, Fulbourn
Cambridge, CB21 5ET
United Kingdom
Email: inquiries@prior.com
Phone: +44 (0)1223 881711

U.S.A.

Prior Scientific, Inc.
80 Reservoir Park Drive
Rockland, MA. 02370
U.S.A.
Email: info@prior.com
Phone: +1 781.878.8442

GERMANY

Prior Scientific Instruments GmbH
Maria-Pawlowna-Str. 4
D-07743, Jena, Germany
Email: jena@prior.com
Phone: +49 (0) 3641 24 20 10

JAPAN

Kayabacho 3rd Nagaoka Bldg 10F,
2-7-10, Nihonbashi Kayabacho, Chuo-Ku,
Tokyo103-0025, Japan
Email: info-japan@prior.com
Phone: 03-5652-8831

CHINA

Prior Scientific Instruments (Suzhou) Ltd.
Room 1812, Honghai Building,
72 Xingdu Street, Suzhou Industrial Park,
Suzhou, 215000 China
Email: info-china@prior.com
Phone: +86 (0)512 6617 5866

