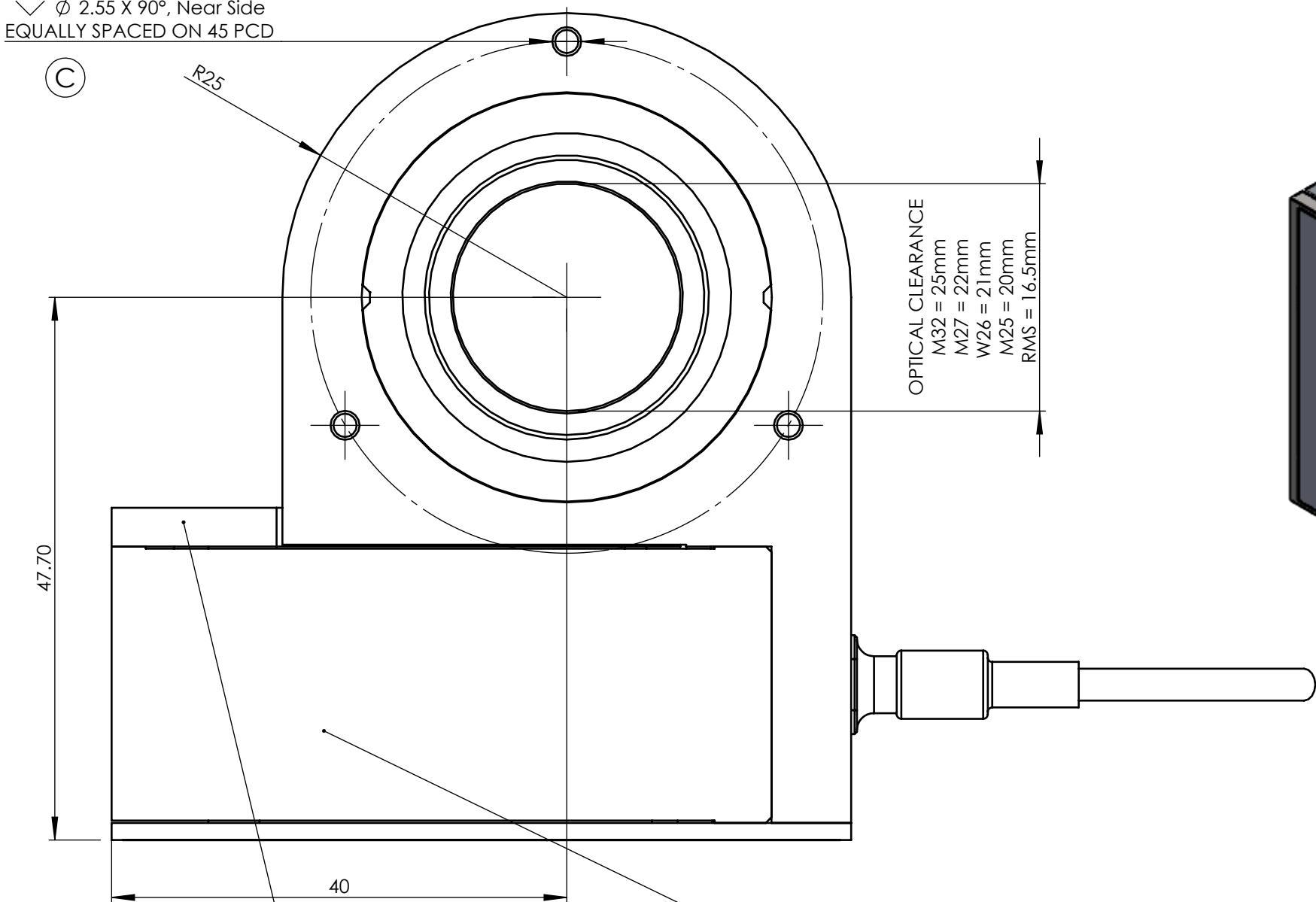
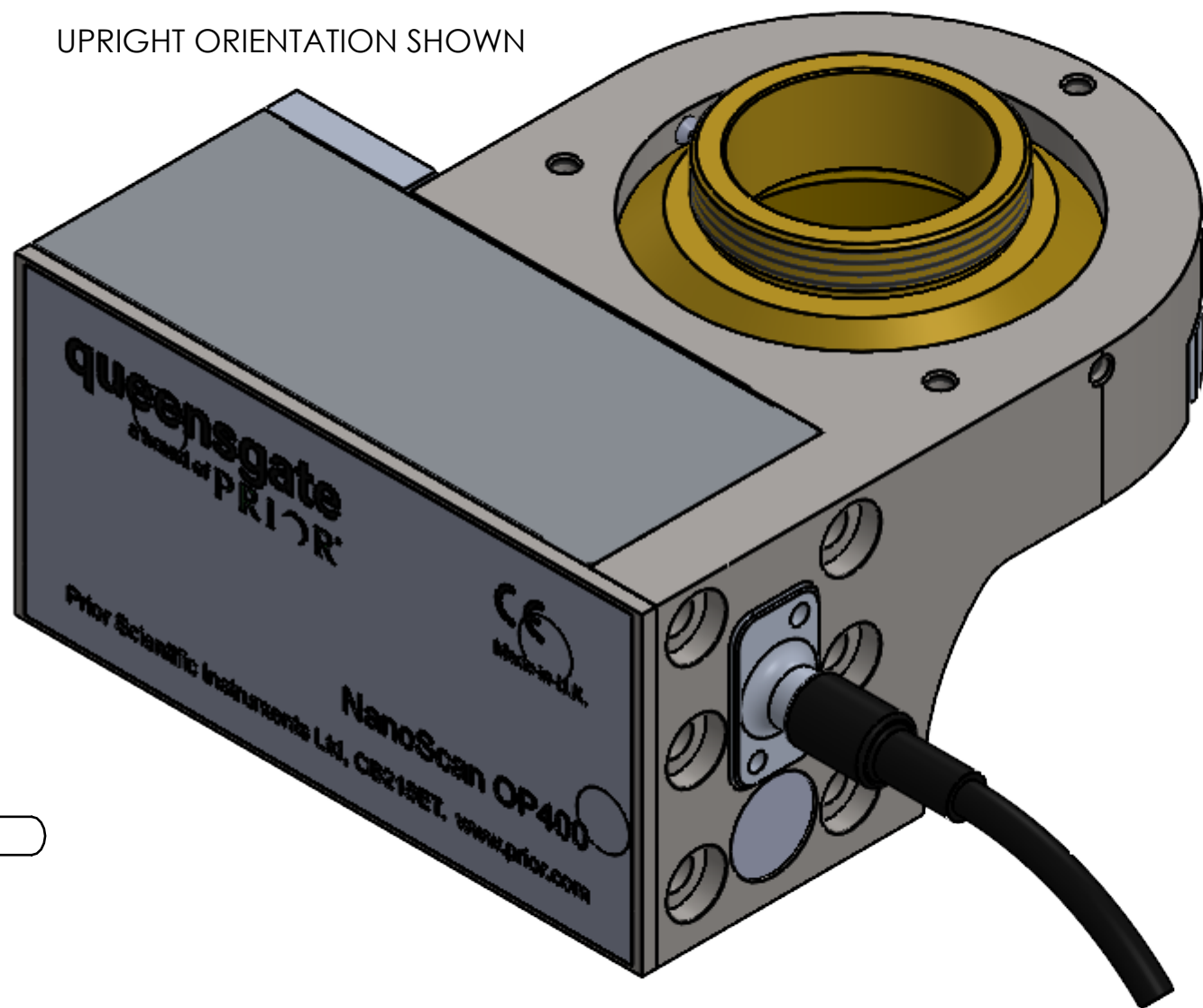


3 x  $\varnothing$  2.05  $\nabla$  6.35  
M2.5 - 6H  $\nabla$  5  
✓  $\varnothing$  2.55 X 90°, Near Side  
EQUALLY SPACED ON 45 PCD



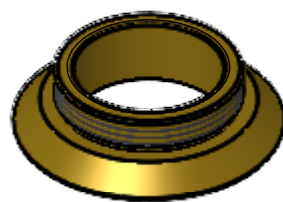
OPTICAL CLEARANCE  
M32 = 25mm  
M27 = 22mm  
W26 = 21mm  
M25 = 20mm  
RMS = 16.5mm

UPRIGHT ORIENTATION SHOWN



**ADAPTERS AND ACCESSORIES**

(SOLD SEPARATLY NOT SHOWN TO SCALE)



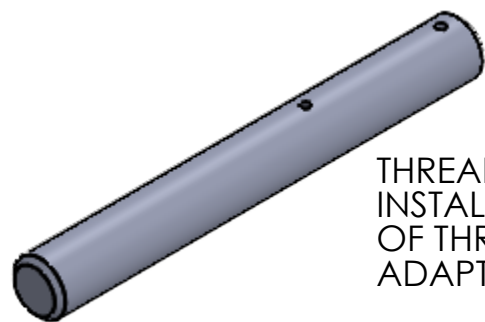
MICROSCOPE THREAD MOUNT.  
SELECT THREAD TO MATCH  
MICROSCOPE RMS, M25, W26,  
M27 OR M32.



OBJECTIVE THREAD ADAPTER.  
SELECT APPROPRIATE THREAD  
TO MATCH OBJECTIVE RMS,  
M25, W26 OR M27. NOT  
REQUIRED FOR M32 SYSTEMS.



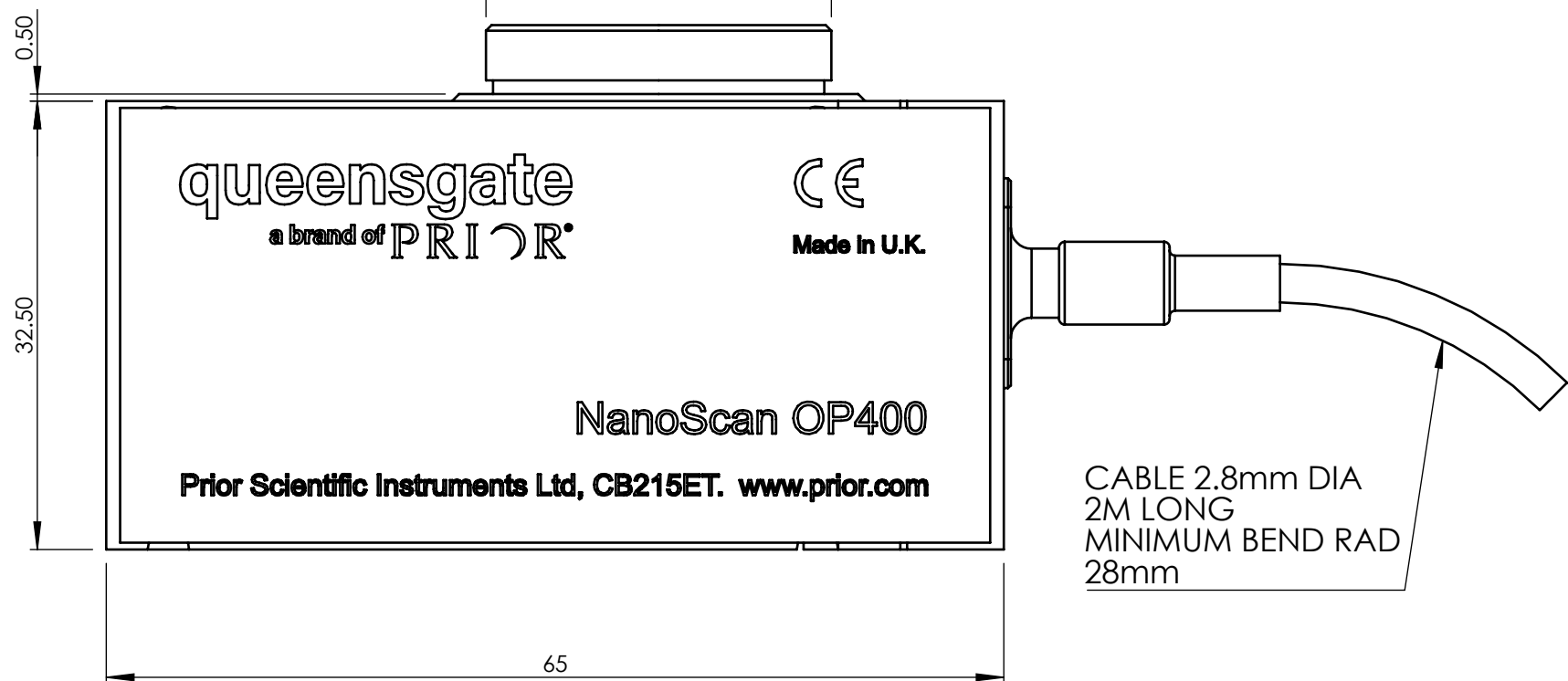
PARAFOCAL SPACERS FOR  
MOVING OTHER OBJECTIVES  
IN MICROSCOPE NOSE TO THE  
SAME FOCAL HEIGHT RMS, M25,  
W26, M27 OR M32. 13mm LONG  
EXCEPT M32 WHICH IS 12mm.



THREAD ADAPTER KEY CAN AID  
INSTALLATION AND REMOVAL  
OF THREAD ADAPTERS LIGHTLY NIP UP  
ADAPTERS ON INSTALLATION.

WHEN MOUNTING DIRECT ON THE 3 x M2.5 LEAVE >0.5 CLEARANCE  
ABOVE THIS FACE

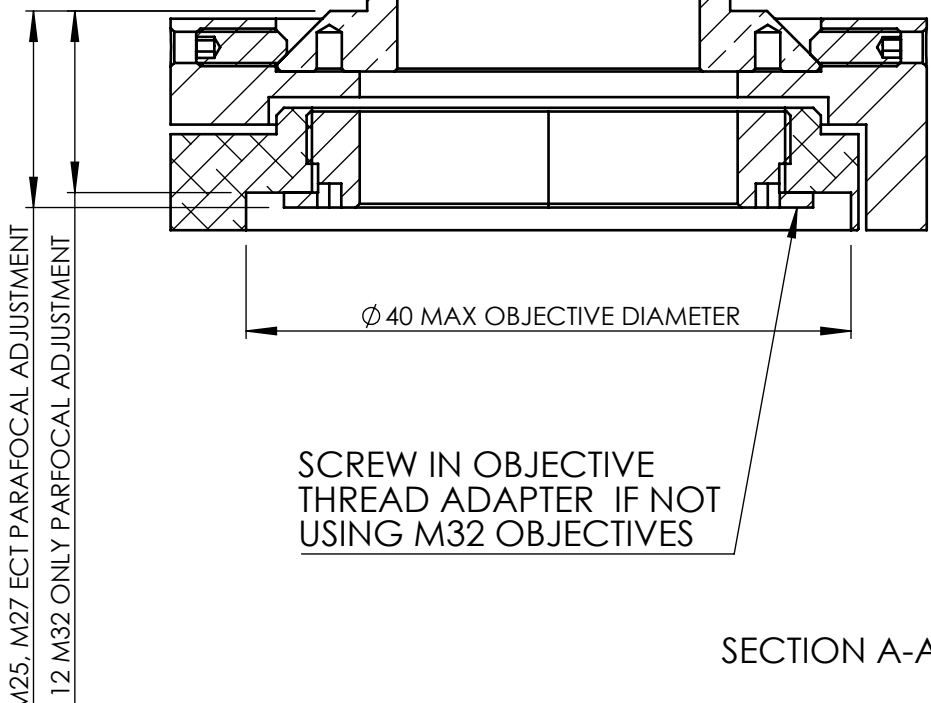
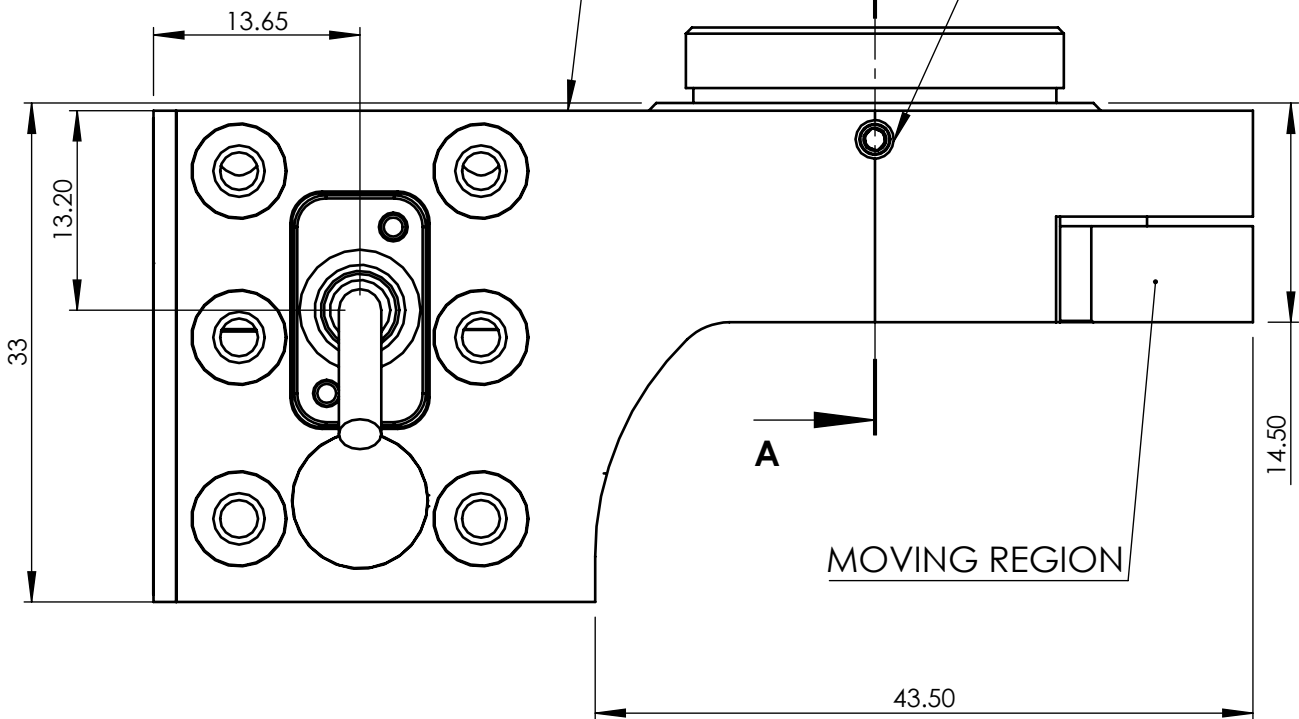
SELECT MICROSCOPE THREAD ADAPTER WITH THREAD TO SUIT MICROSCOPE  
(SOLD SEPARATELY)



CABLE 2.8mm DIA  
2M LONG  
MINIMUM BEND RAD  
28mm

STATIC REGION

TWO MICROSCOPE ADAPTER CLAMPING GRUB SCREWS  
USE 1.3mm (0.050") HEX KEY. USE ONLY THE SCREWS PROVIDED.



SECTION A-A

TITLE	OP-400 INSTALLATION DRAWING	APRVD.	M.A.	3RD ANGLE	DO NOT SCALE IF IN DOUBT ASK
DRG. No.	QG-0494-IN-100001	DRAWN	JC	TOLERANCE UNLESS OTHERWISE STATED	
MATL.	STAINLESS, BRASS, ALUMINIUM	SCALE	1:1	$\pm 0.1\text{mm}$	
FINISH	CLEAN	DATE	09.08.19	BREAK ALL SHARP EDGES	
PRIOR Scientific Instruments Ltd. Fulbourn, Cambridge.					

ECN	REV	CREATED	APP	DATE	DETAILS
E11148	C	JC	M.A.	15.12.22	M2.5 MOUNT HOLES ADDED
NA	B	JC	AR	31.05.19	Product Launch
1st Rel	A	JC	AR	31.05.19	PROTOTYPE