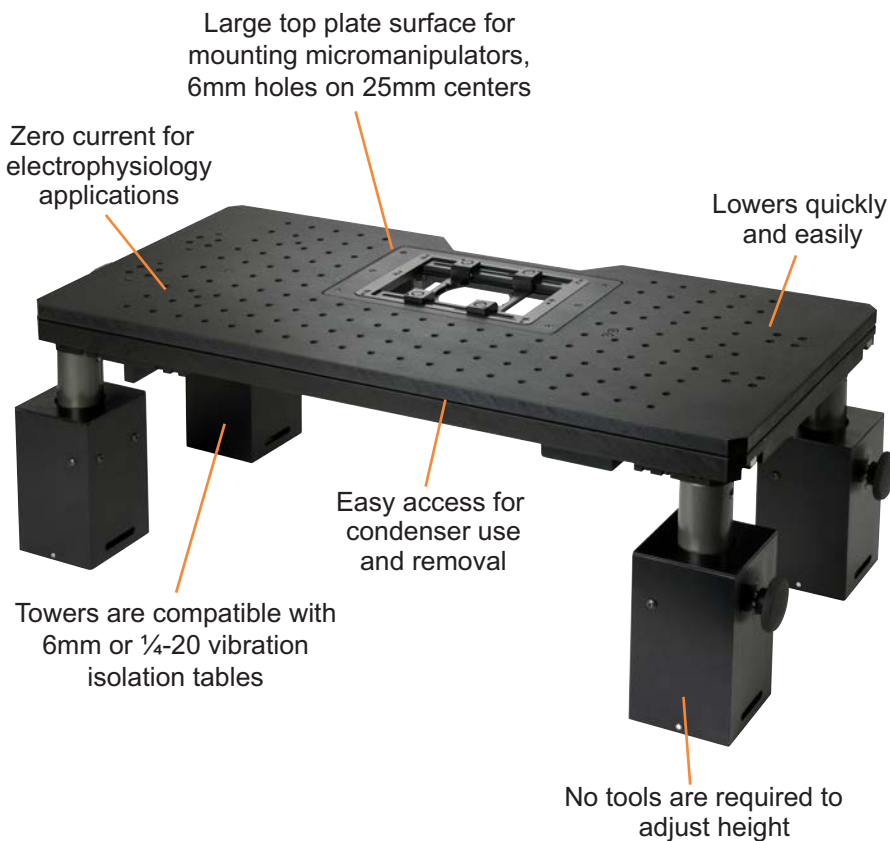


## Motorized ZDeck Quick Adjust Platform System

### For Nikon FN1/Ni, Olympus BX51WI/BX61WI and Zeiss Axio Examiner Microscopes



Prior Scientific's ZDeck Quick Adjust Platform enables users to increase their productivity by allowing them to image multiple areas of interest with speed and precision.

#### ZDeck Quick Adjust Platform features:

- Pneumatic piston towers which make raising and lowering the ZDeck virtually effortless.
- No tools are required to adjust the height.
- Change between thin sample and whole animal imaging height in seconds.
- ProScan™III controller and PS3J100 joystick provide ultra fine XY stage control via dual digipots.
- A completely integrated XY stage which provides a lower profile with a thinner cross section allowing for large samples.
- Oversized top surface for mounting additional micromanipulators and stereotaxic instruments.
- Fully encoder upgradable.
- Large sample area for mounting existing, heating, cooling, perfusion and incubation chambers.
- Compatible with most imaging software.

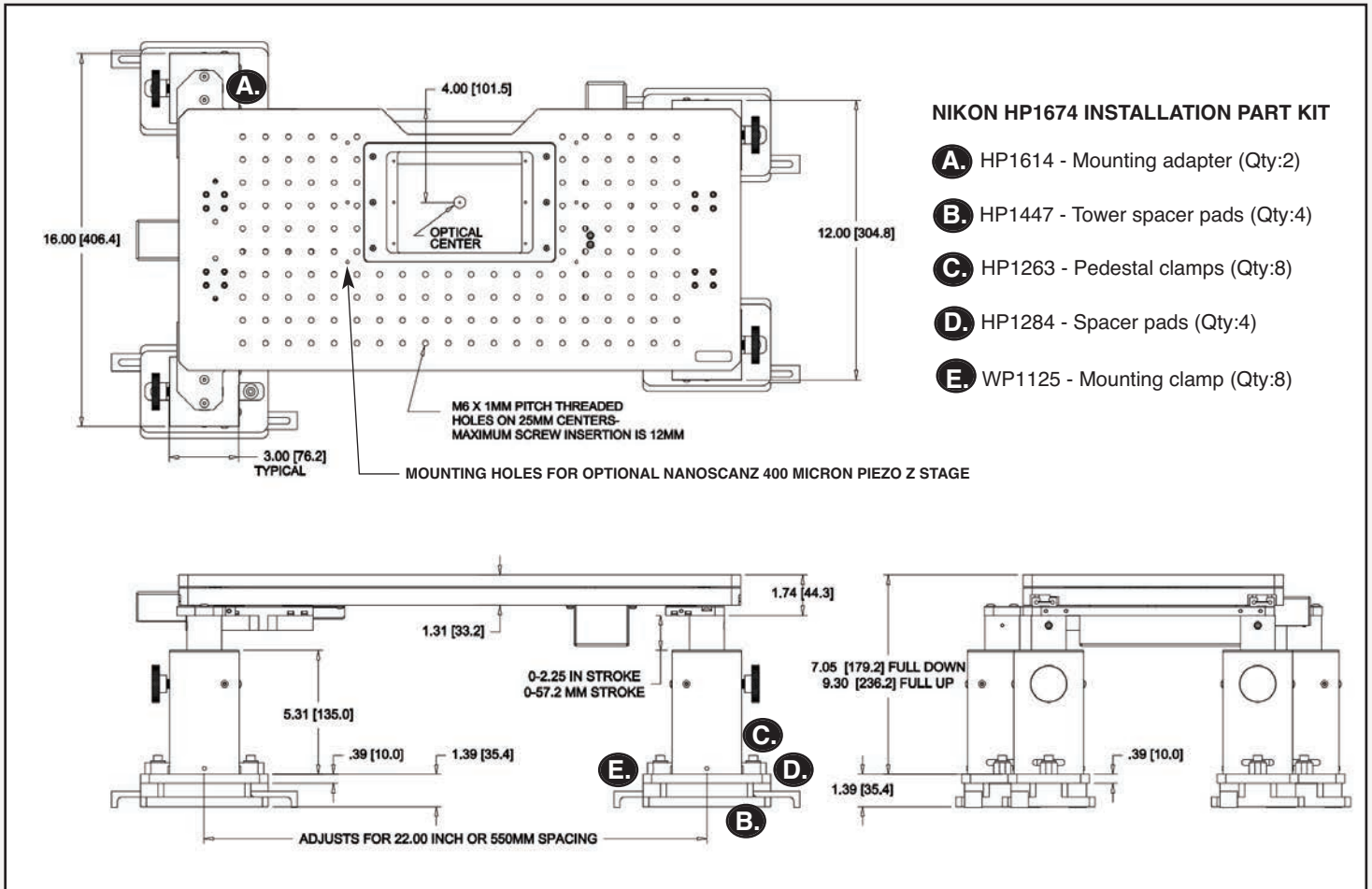
#### Features:

- Image multiple areas of interest with speed and precision
- Lowers quickly & easily to provide access for loading and unloading samples
- No tools are required to adjust height
- Changing between thin sample and whole animal imaging can be accomplished in seconds
- Pneumatic pistons make raising and lowering the unit effortless
- Provides sub micron repeatability and smooth movement
- Compatible with 6mm or 1/4-20 vibration isolation tables
- Pillar spaces allow for Koehler illumination at a range of focus heights
- Optional encoders for highest precision available
- Compatible with multi-photon setup configurations

# Motorized ZDeck Quick Adjust Platform System

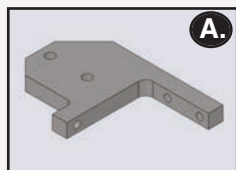
For Nikon FN1/Ni Microscopes

## Outline Drawing and Part Number Information

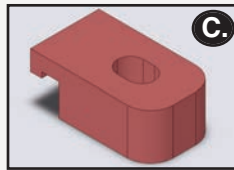


### NIKON HP1674 INSTALLATION PART KIT

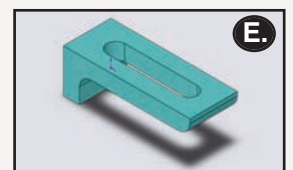
- A.** HP1614 - Mounting adapter (Qty:2)
- B.** HP1447 - Tower spacer pads (Qty:4)
- C.** HP1263 - Pedestal clamps (Qty:8)
- D.** HP1284 - Spacer pads (Qty:4)
- E.** WP1125 - Mounting clamp (Qty:8)



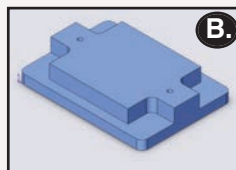
**A. Mounting Adapter**  
Part Number: HP1614  
Quantity: 2



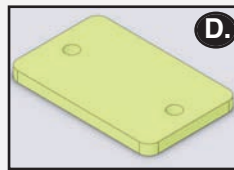
**C. Pedestal Clamps**  
Part Number: HP1263  
Quantity: 8



**Mounting Clamps**  
Part Number: WP1125  
Quantity: 8



**B. Tower Spacer Pad**  
Part Number: HP1447  
Quantity: 4



**D. Spacer Pads**  
Part Number: HP1284  
Quantity: 4



Worldwide distribution



Prior Scientific Ltd  
Cambridge, UK

T. +44 (0) 1223 881711  
E. uksales@prior.com

Prior Scientific Inc  
Rockland, MA, USA

T. +1 781-878-8442  
E. info@prior.com

Prior Scientific GmbH  
Jena, Germany

T. +49 (0) 3641 675 650  
E. jena@prior.com

Prior Scientific KK  
Tokyo, Japan

T. +81-3-5652-8831  
E. info-japan@prior.com

## Motorized ZDeck Quick Adjust Platform System

For Nikon FN1/Ni Microscopes

### Specifications

Part Number	Description
ZDeck travel	57mm
Vibration table compatibility	1/4-20 or 6mm
XY travel	65mm x 65mm
XY resolution	40 nanometers
XY Speed	15mm/sec
Spacers provided	Four pillar spacers, four one inch spacers
ProScan controller power	Universal external power supply. Input 100-240V, 50/60Hz, Max 1.6A
ProScan computer interface	RS232/USB
ProScan communication protocol	8 bit word, 1 stop bit, no parity, no handshake

### Adjustable Rise Platform Hardware Kit

Quantity	Description
8	1/4x20x1.5" screw
10	1/4x20x1.0" screw
1	3/16" allen wrench
8	.75mm thick M5 washer
1	5mm hex wrench
1	3mm allen wrench
10	1/4 standard flat washer
8	M4 x 10 screw
4	M4 x 30 screw
8	M5 x 14 screw
10	M6 x 25 screw
8	M6 x 35 screw

### ZDN12MN Complete System Part List

Part Number	Description
ZDM1M2	Motorized ZDeck stage
HP1266	Hardware installation kit
HP1674	Nikon installation parts kit
H31XYZEF	ProScan controller
PS3J100	ProScan joystick
H473UP	Universal specimen holder
H230	Solid aluminum plate

### Ordering Information

Part Number	Description
<b>ZDN12MN for Nikon FN1/Ni</b>	Prior high precision motorized ZDeck system complete with Prior ZDeck, motorized ProScan XY stage, ProScan III controller, PS3J100 joystick with dual digipot controls, universal holder, solid aluminum plate and pillar spacers.
<b>ZDN12ME for Nikon FN1/Ni</b>	Prior high precision motorized ZDeck system complete with Prior ZDeck, motorized ProScan XY stage with 50 nanometer linear scales, ProScan III controller, PS3J100 joystick with dual digipot controls, universal holder, solid aluminum plate and pillar spacers.

**PRIOR**  
Scientific



### Worldwide distribution

**Prior Scientific Ltd**  
Cambridge, UK

T. +44 (0) 1223 881711  
E. uksales@prior.com

**Prior Scientific Inc**  
Rockland, MA. USA

T. +1 781-878-8442  
E. info@prior.com

**Prior Scientific GmbH**  
Jena, Germany

T. +49 (0) 3641 675 650  
E. jena@prior.com

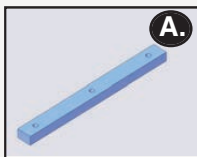
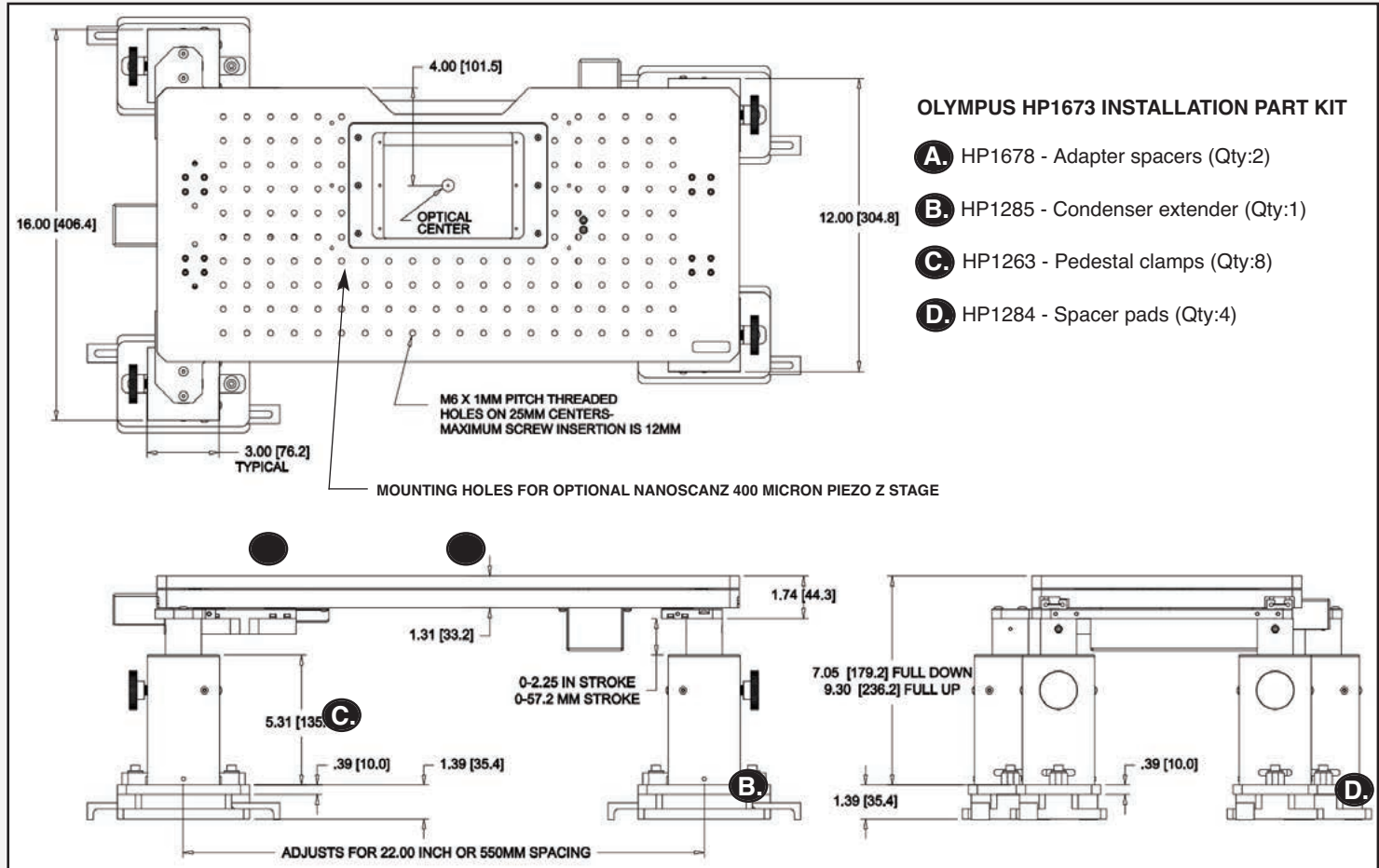
**Prior Scientific KK**  
Tokyo, Japan

T. +81-3-5652-8831  
E. info-japan@prior.com

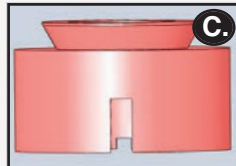
# Motorized ZDeck Quick Adjust Platform System

For Olympus BX51WI/BX61WI Microscopes

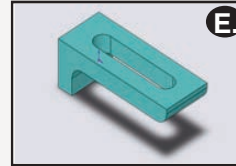
## Outline Drawing and Part Number Information



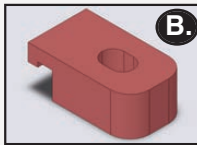
**A. Adapter Spacers**  
Part Number: HP1678  
Quantity: 2



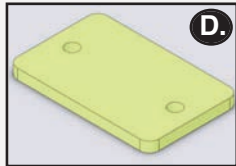
**C. Condenser Extender**  
Part Number: WP1065  
Quantity: /



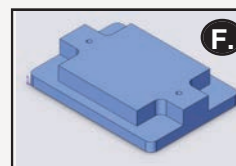
**E. Mounting Clamps**  
Part Number: WP1125  
Quantity: 8



**B. Pedestal Clamps**  
Part Number: HP1263  
Quantity: 8



**D. Spacer Pads**  
Part Number: HP1284  
Quantity: 4



**F. Tower Spacer Pads**  
Part Number: HP1SS5  
Quantity: 4

**PRIOR**  
Scientific

### Worldwide distribution



Prior Scientific Ltd  
Cambridge, UK

T. +44 (0) 1223 881711  
E. uksales@prior.com

Prior Scientific Inc  
Rockland, MA, USA

T. +1 781-878-8442  
E. info@prior.com

Prior Scientific GmbH  
Jena, Germany

T. +49 (0) 3641 675 650  
E. jena@prior.com

Prior Scientific KK  
Tokyo, Japan

T. +81-3-5652-8831  
E. info-japan@prior.com

## Motorized ZDeck Quick Adjust Platform System

For Olympus BX51WI/BX61WI Microscopes

### Specifications

Part Number	Description
ZDeck travel	57mm
Vibration table compatibility	1/4-20 or 6mm
XY travel	65mm x 65mm
XY resolution	40 nanometers
XY Speed	15mm/sec
Spacers provided	One condenser, four pillar spacers, two adapter spacers
ProScan controller power	Universal external power supply. Input 100-240V, 50/60Hz, Max 1.6A
ProScan computer interface	RS232/USB
ProScan communication protocol	8 bit word, 1 stop bit, no parity, no handshake

### Adjustable Rise Platform Hardware Kit

Quantity	Description
8	1/4x20x1.5" screw
10	1/4x20x1.0" screw
1	3/16" allen wrench
8	.75mm thick M5 washer
1	5mm hex wrench
1	3mm allen wrench
10	1/4 standard flat washer
8	M4 x 10 screw
4	M4 x 30 screw
8	M5 x 14 screw
10	M6 x 25 screw
8	M6 x 35 screw

### ZDP12MN Complete System Part List

Part Number	Description
ZDM1M2	Motorized ZDeck stage
HP1266	Hardware installation kit
HP1673	Olympus installation parts kit
H31XYZEF	ProScan controller
PS3J100	ProScan joystick
H473UP	Universal specimen holder
H230	Solid aluminum plate

### Ordering Information

Part Number	Description
<b>ZDP12MN for Olympus BX51WI/61WI</b>	Prior high precision motorized ZDeck system complete with Prior ZDeck, motorized ProScan XY stage, ProScan III controller, PS3J100 joystick with dual digipot controls, universal holder, solid aluminum plate, condenser spacer and four 10mm pillar spacers.
<b>ZDP12ME for Olympus BX51WI/61WI</b>	Prior high precision motorized ZDeck system complete with Prior ZDeck, motorized ProScan XY stage with 50 nanometer linear scales, ProScan III controller, PS3J100 joystick with dual digipot controls, universal holder, solid aluminum plate, condenser spacer and four 10mm pillar spacers.

**PRIOR**  
Scientific



### Worldwide distribution

**Prior Scientific Ltd**  
Cambridge, UK

T. +44 (0) 1223 881711  
E. uksales@prior.com

**Prior Scientific Inc**  
Rockland, MA, USA

T. +1 781-878-8442  
E. info@prior.com

**Prior Scientific GmbH**  
Jena, Germany

T. +49 (0) 3641 675 650  
E. jena@prior.com

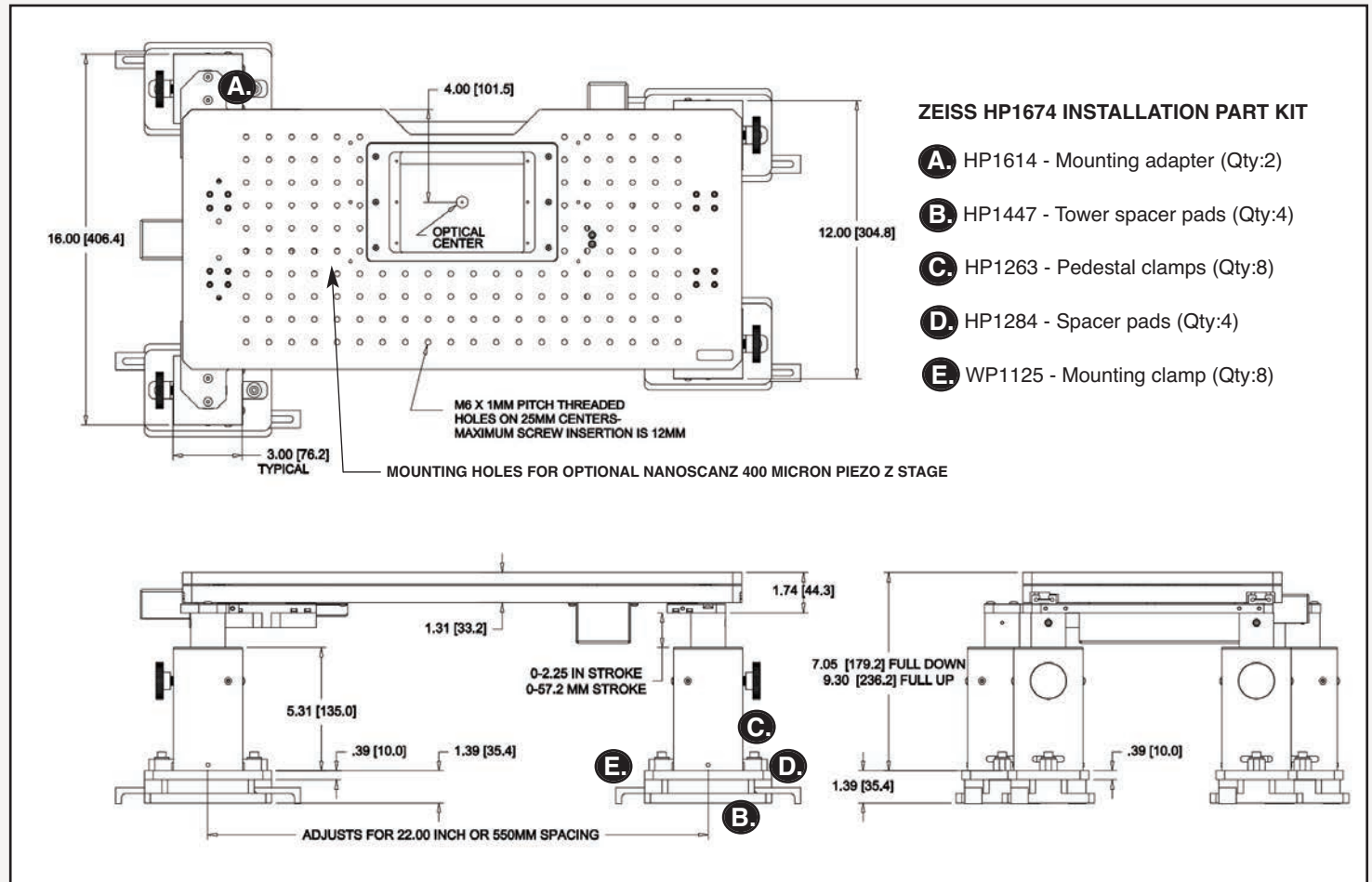
**Prior Scientific KK**  
Tokyo, Japan

T. +81-3-5652-8831  
E. info-japan@prior.com



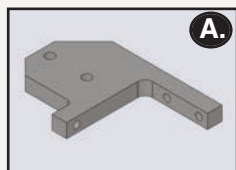
**Motorized ZDeck Quick Adjust Platform System**  
For Zeiss Axio Examiner Microscopes

**Outline Drawing and Part Number Information**

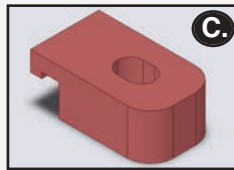


**ZEISS HP1674 INSTALLATION PART KIT**

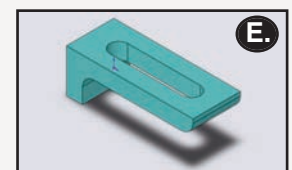
- A.** HP1614 - Mounting adapter (Qty:2)
- B.** HP1447 - Tower spacer pads (Qty:4)
- C.** HP1263 - Pedestal clamps (Qty:8)
- D.** HP1284 - Spacer pads (Qty:4)
- E.** WP1125 - Mounting clamp (Qty:8)



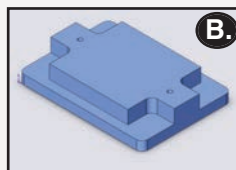
**A. Mounting Adapter**  
Part Number: HP1614  
Quantity: 2



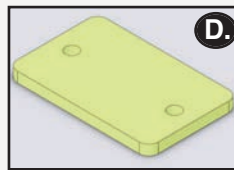
**C. Pedestal Clamps**  
Part Number: HP1263  
Quantity: 8



**Mounting Clamps**  
Part Number: WP1125  
Quantity: 8



**B. Tower Spacer Pad**  
Part Number: HP1447  
Quantity: 4



**D. Spacer Pads**  
Part Number: HP1284  
Quantity: 4



## Motorized ZDeck Quick Adjust Platform System

For Zeiss Axio Examiner Microscopes

### Specifications

Part Number	Description
ZDeck travel	57mm
Vibration table compatibility	1/4-20 or 6mm
XY travel	65mm x 65mm
XY resolution	40 nanometers
XY Speed	15mm/sec
Spacers provided	Four 10mm pillar spacers, four one inch spacers
ProScan controller power	Universal external power supply. Input 100-240V, 50/60Hz, Max 1.6A
ProScan computer interface	RS232/USB
ProScan communication protocol	8 bit word, 1 stop bit, no parity, no handshake

### Adjustable Rise Platform Hardware Kit

Quantity	Description
8	1/4x20x1.5" screw
10	1/4x20x1.0" screw
1	3/16" allen wrench
8	.75mm thick M5 washer
1	5mm hex wrench
1	3mm allen wrench
10	1/4 standard flat washer
8	M4 x 10 screw
4	M4 x 30 screw
8	M5 x 14 screw
10	M6 x 25 screw
8	M6 x 35 screw

### ZDZ12MN Complete System Part List

Part Number	Description
ZDM1M2	Motorized ZDeck stage
HP1266	Hardware installation kit
HP1674	Zeiss installation parts kit
H31XYZEF	ProScan controller
PS3J100	ProScan joystick
H473UP	Universal specimen holder
H230	Solid aluminum plate

### Ordering Information

Part Number	Description
<b>ZDZ12MN for Zeiss Axio Examiner</b>	Prior high precision motorized ZDeck system complete with Prior ZDeck, motorized ProScan XY stage, ProScan III controller, PS3J100 joystick with dual digipot controls, universal holder, solid aluminum plate and pillar spacers.
<b>ZDZ12ME for Zeiss Axio Examiner</b>	Prior high precision motorized ZDeck system complete with Prior ZDeck, motorized ProScan XY stage with 50 nanometer linear scales, ProScan III controller, PS3J100 joystick with dual digipot controls, universal holder, solid aluminum plate and pillar spacers.

**PRIOR**  
Scientific



### Worldwide distribution

**Prior Scientific Ltd**  
Cambridge, UK

T. +44 (0) 1223 881711  
E. uksales@prior.com

**Prior Scientific Inc**  
Rockland, MA. USA

T. +1 781-878-8442  
E. info@prior.com

**Prior Scientific GmbH**  
Jena, Germany

T. +49 (0) 3641 675 650  
E. jena@prior.com

**Prior Scientific KK**  
Tokyo, Japan

T. +81-3-5652-8831  
E. info-japan@prior.com