

Resetting Your Controller

For ES9, ES10 (OptiScan) and H129, H130 and (ProScanII) and Proscan III controllers reset the controller with the following instructions.

Note the resetting of the controller will remove all settings from inside the controller, and return them to default. You should note down any settings you wish to keep.

- Use the instructions below to connect to your controller via Prior Terminal (instructions below)

If Connected via RS-232 1 port on the back of the controller.

- Send the command RESET
- The controller will respond with a the following



- Your controller has been reset.
- Your system is ready to use

If Connected via RS-232 2 port on the back of the controller.

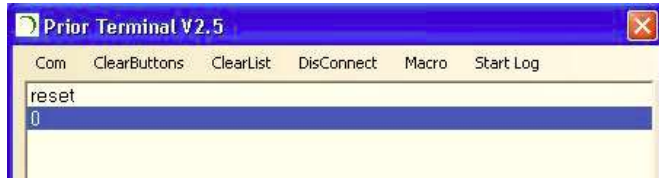
- Send the command RESET
- The controller will respond with the following;



- Your controller has been reset.
- Your system is ready to use

If Connected via USB port on the back of the controller.

- Send the command RESET
- The controller will respond with the following;



- Your controller has been reset.
- During the process of the RESET command the computer may drop the connection to the USB. If so please restart your controller.
- Your system is ready to use.

Prior Terminal

Prior terminal can be found in the Downloads section of the Prior Website.

http://www.prioruk.com/downloadcentre/dc_software.html

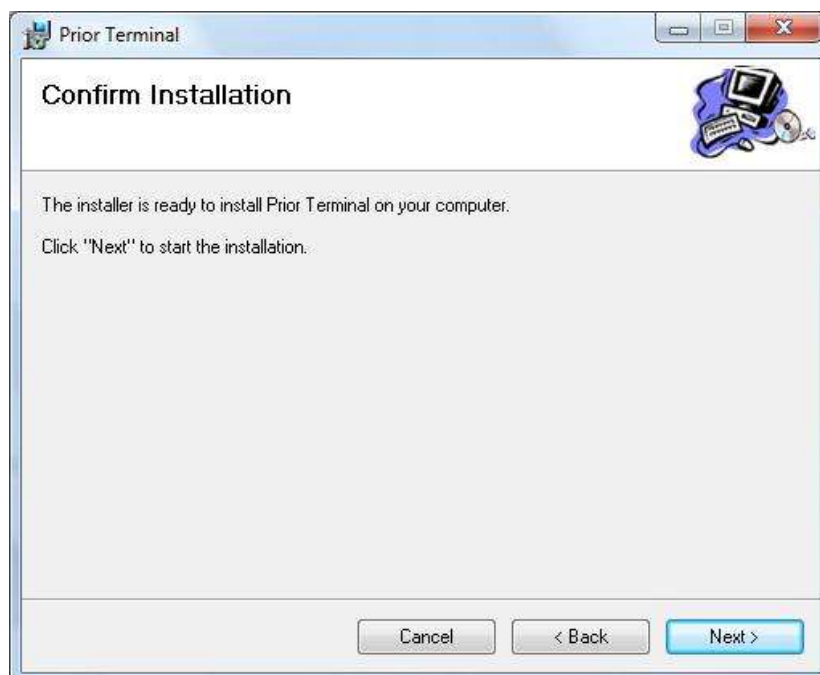
Terminal Set Up



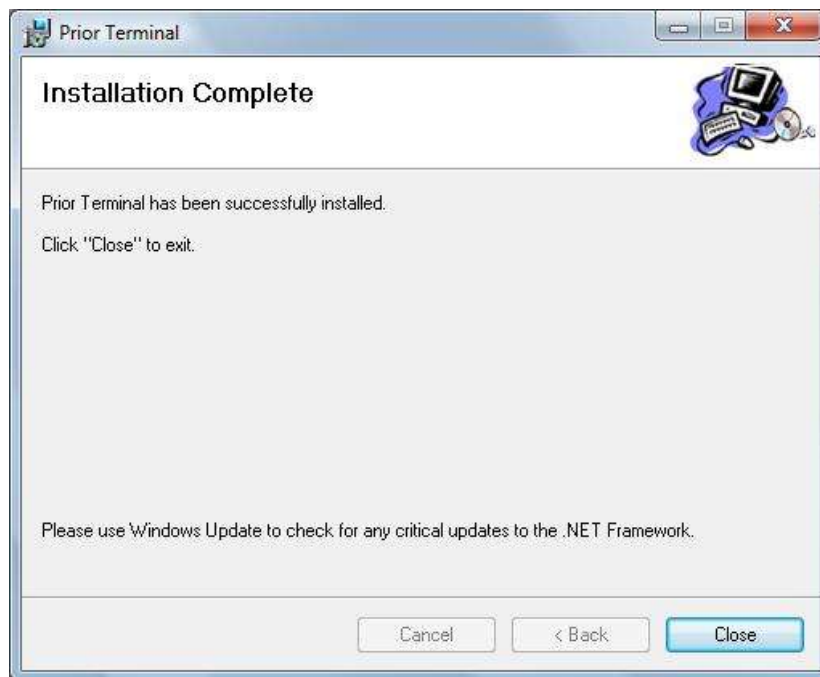
Click NEXT



Browse to a folder that you want to install the program into.

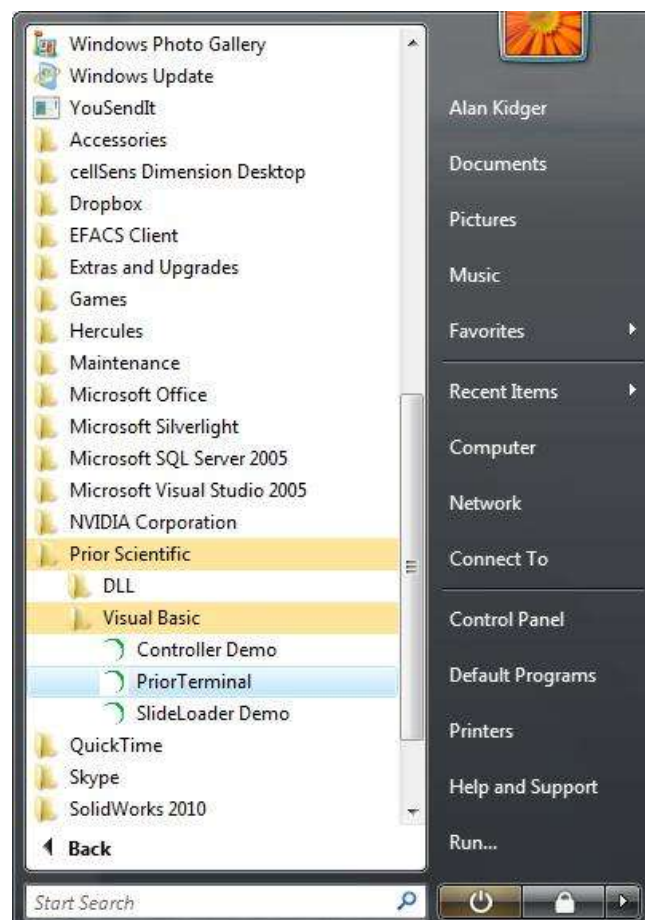


Click NEXT

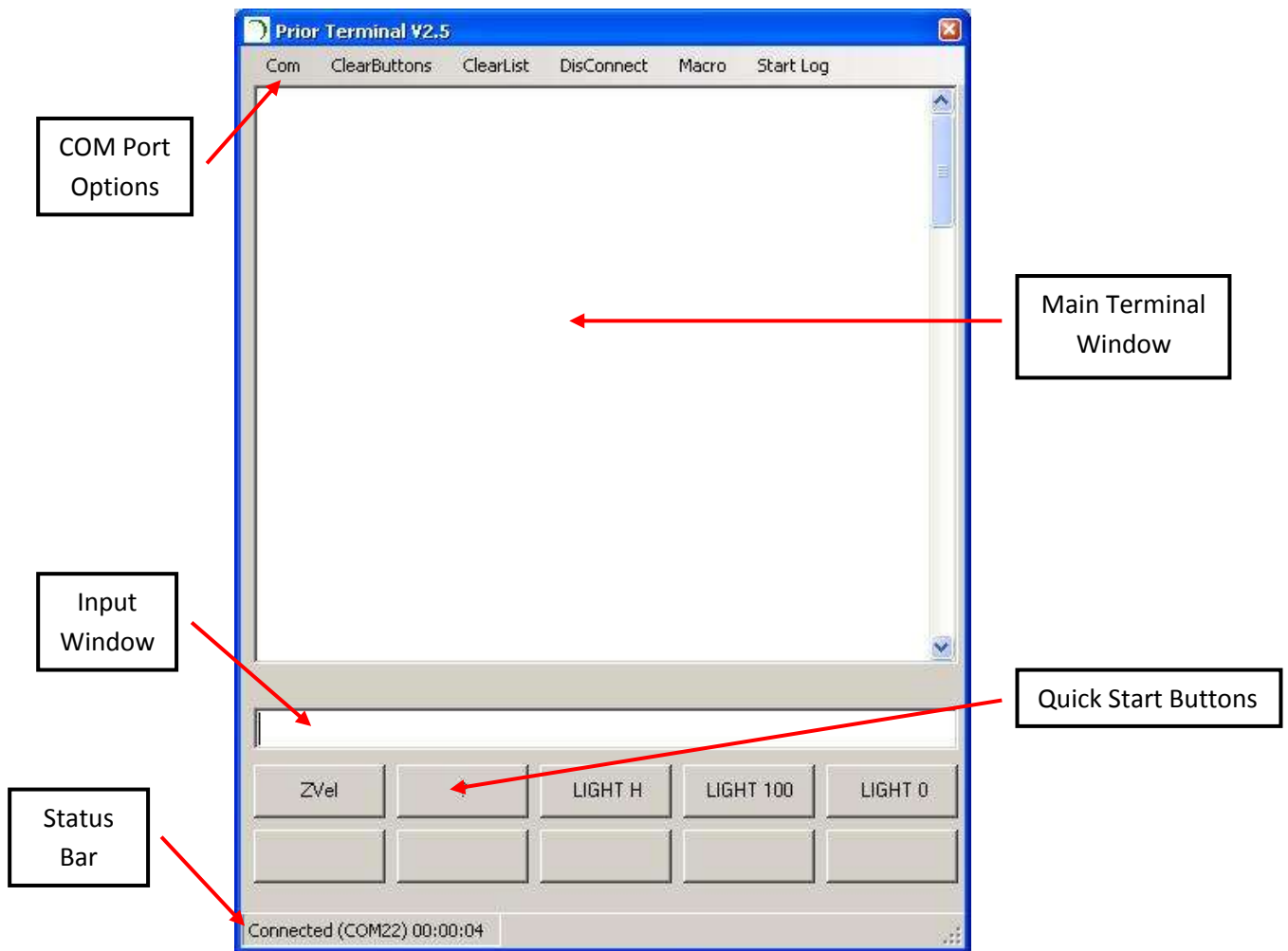


Click CLOSE

Prior Terminal can be launched from the Start Menu



Prior Terminal GUI



Configure Prior Terminal

Using the COM Port Options menu choose the COM port and Baud Rate Speed.



If you do not know your COM port please check Windows Device Manager.

Default setting for the Baud Speed is 9600, however some software can change this so if you do not get a connection please try the other Baud speed setting.

If you have connected to the Prior Controller successfully, it will be indicated in the Status Bar of Prior Terminal.

Working With Prior Terminal

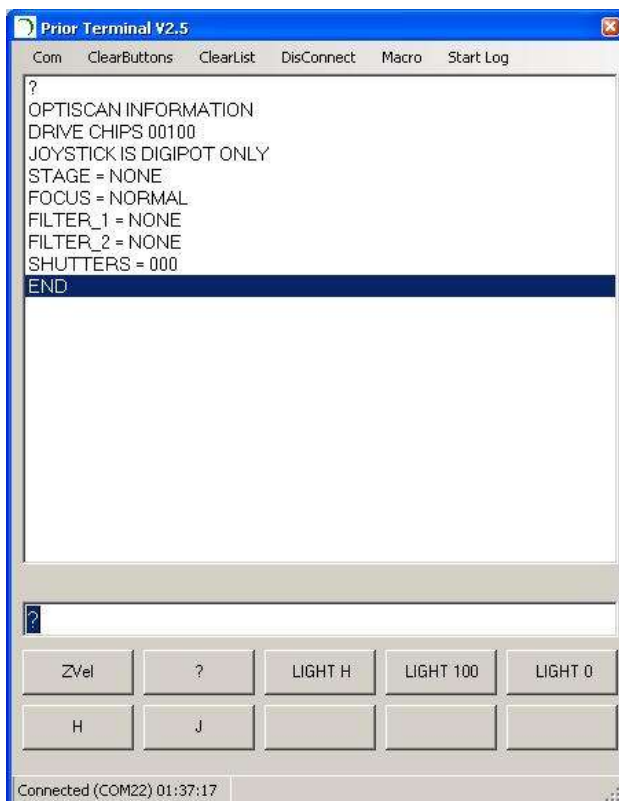
Once connected to the Prior controller, Terminal can be used either to interrogate the controller current status or send commands direct to the controller. A list of commands can be found in the back of the Prior Proscan III manual.

Type in the required command into the Input window of Prior Terminal and click Enter (<CR>)

Some common commands are as follows;

General Commands

- | | |
|-----------|--|
| ? | Reports information about the peripherals currently connected to the controller. |
| DATE | Reports the Instrument name, version number and compile time. |
| VERSION | Reports the units software version number. |
| ERRORSTAT | Reports any errors within the system. |
| RESET | Resets the controller back to factory settings. Any saved data will be lost. |

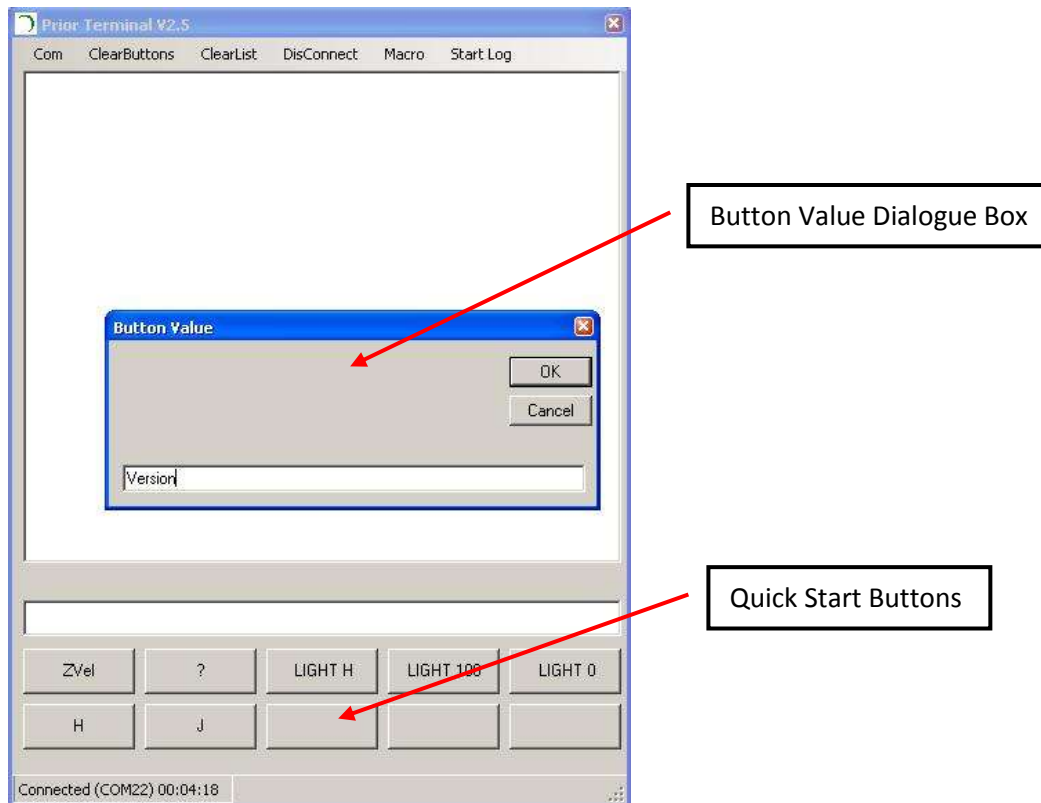


An example of the ? command.
This responds back the the
information about the peripherals
connected to the controller.

Quick Start Buttons

It is possible to save the some of the most frequently used commands to a quick start button.

Right Click on and Quick Start Button and a dialogue box should appear to enter the command.



- Type in the command to be saved to the Quick Start Button. In the above example the command is Version.
- Press OK.
- The button is now saved with this command. Clicking this button will issue the command to the controller.