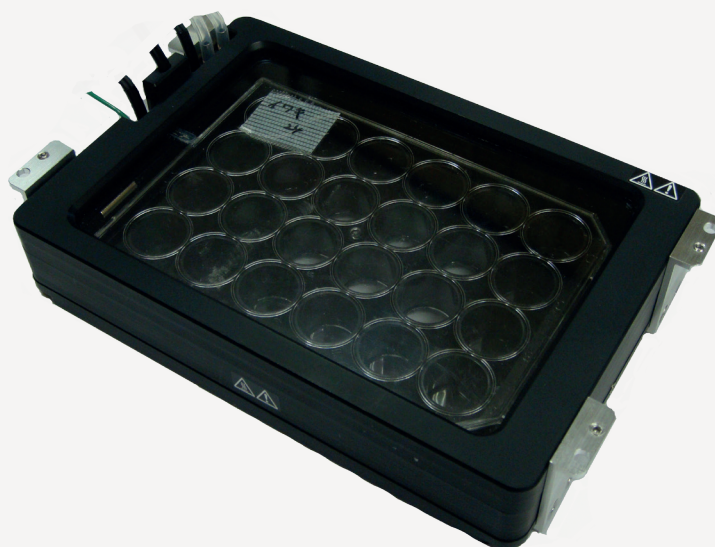


## Incubation Chamber

### Incubating chamber for the NZ400

Providing a perfectly stable and optimised environment for maintaining cells during long time lapse experiments, the incubator will not affect the stage in any way as it is designed to simply replace the sample holder. The incubator thus combines perfectly with the NanoScan 400 to provide a powerful and precise method of observing live cells for high-end applications.

- An anti-Z drift design minimises thermal drift during the experimentation period.
- An optically clear glass cover is heated so as to prevent the build up of condensation.
- A range of controllers allow the control of the temperature, pH and CO<sub>2</sub> concentration; working with both pre-mixed and 100% CO<sub>2</sub>.
- Temperature can be rapidly stabilised between ambient levels and 50°C.
- Provides a long term, stable environment.



#### Products available

Product	Description
W3718	Incubator with heating only, objective heater, stage heater for 35mm dish holder
W3719	Incubator with premix gas control, objective heater, stage heater for 35mm dish holder
WP1117	Incubator with digital gas mixing, objective heater, stage heater for 35mm dish holder
W3721	Stage heater for microtitre plate (6 wells)
W3722	Stage heater for microtitre plate (12 wells)
W3723	Stage heater for microtitre plate (24 wells)
W3724	Sample holder for 35 mm dish (incubation system as standard)
W3725	Sample holder for 50/50 mm dish (incubation system as standard)
W3726	Sample holder for chamber slide (incubation system as standard)
W3727	Sample holder for cover glass chamber (incubation system as standard)
W3728	Sample holder for slide glass (incubation system as standard)

#### Worldwide distribution

**Prior Scientific Ltd**  
Cambridge, UK  
T. +44 (0) 1223 881 711  
E. [uksales@prior.com](mailto:uksales@prior.com)

**Prior Scientific Inc**  
Rockland, MA USA  
T. +1 781-878-8442  
E. [info@prior.com](mailto:info@prior.com)

**Prior Scientific GmbH**  
Jena, Germany  
T. +49 (0) 3641 675 650  
E. [jena@prior.com](mailto:jena@prior.com)

**Prior Scientific KK**  
Tokyo, Japan  
T. +81-3-5652-8831  
E. [info-japan@prior.com](mailto:info-japan@prior.com)