

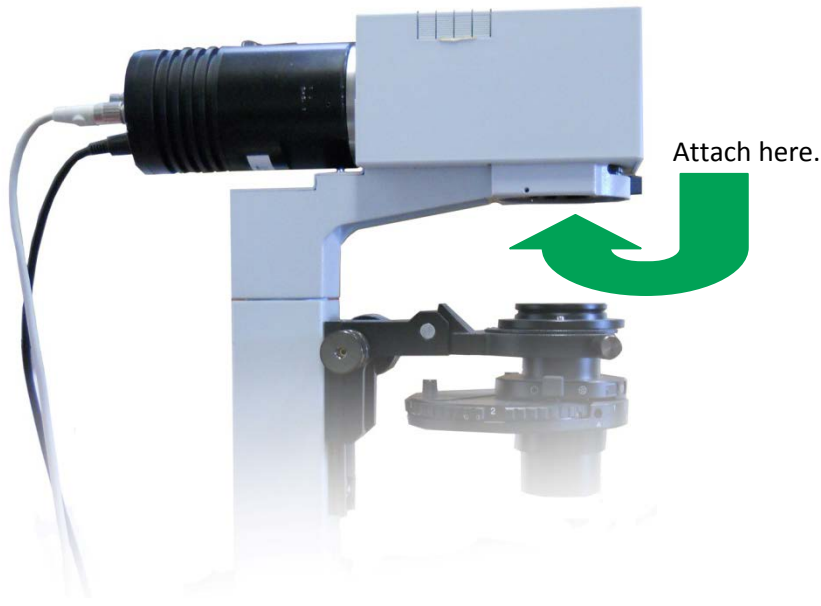
Prior Scientific Help Guides and Installation Instructions

UPDATED 15 June 2015

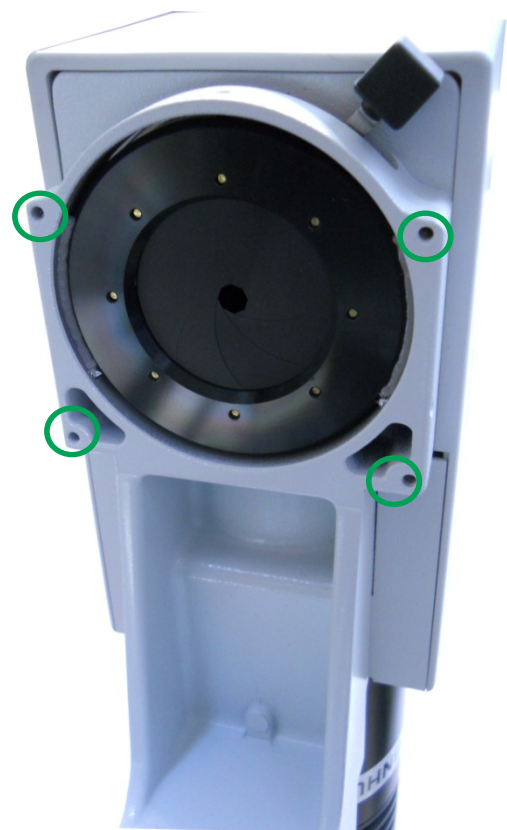
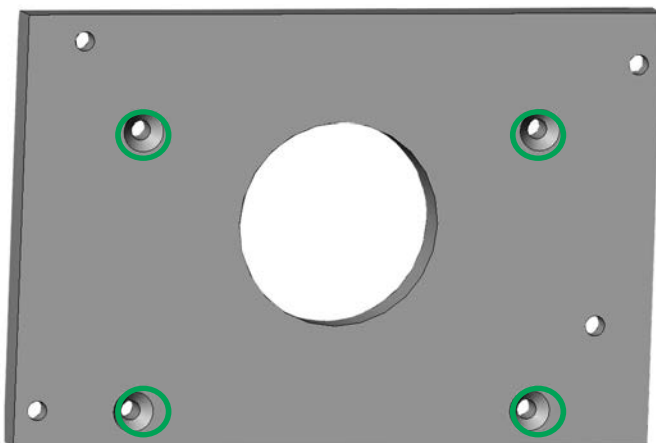
Mounting an HF237 on an IX-2 Microscope

Mounting an HF237 on an IX-2 Microscope

The HF237 mounts underneath the head of the transmission pillar in front of the field stop.



The adapter plate should be attached onto the microscope frame using the 4 small screws provided. The adapter plate attaches to the microscope via the 4 screw sockets circled in green.



The Shutter is then attached to the adapter plate, using the two longer screws provided. Please note that the screws replace the existing screws inside the shutter unit. Ensure the shutter, adapter plate, and the microscope head are all aligned.

