

LumaSpec Installation Instructions

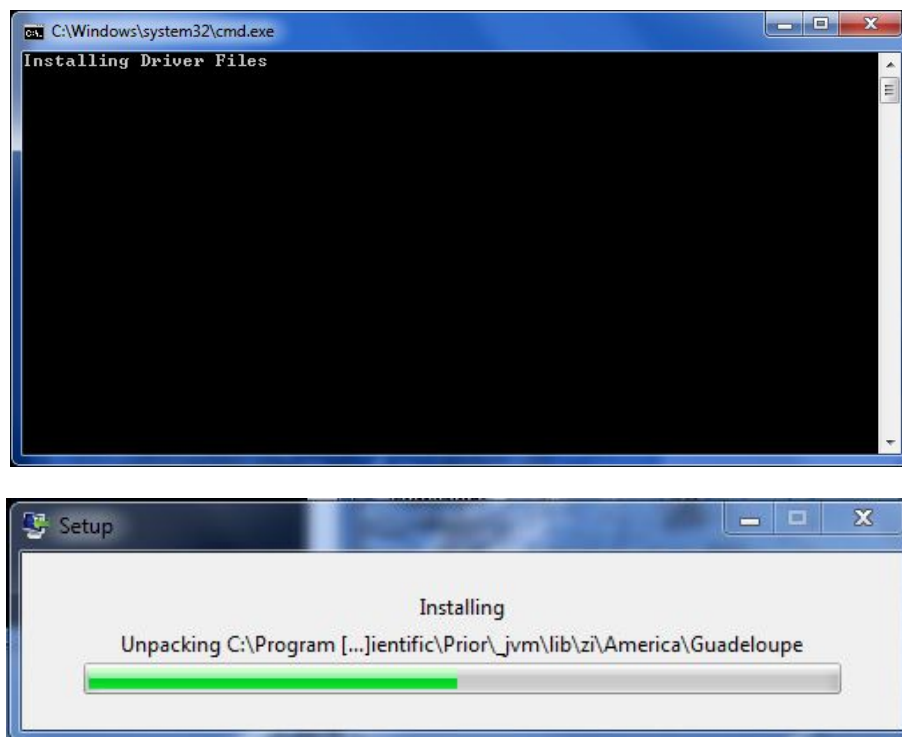
Note:

You must complete the following software installation before connection the LumaSpec 800 to your computer. Before installing the software, please uninstall the LumaSpec software and Omni driver if the software was installed previously. Please note that you will not have the Omni Driver program installed if you are running LumaSpec version 1.8 or later.

Step 1:

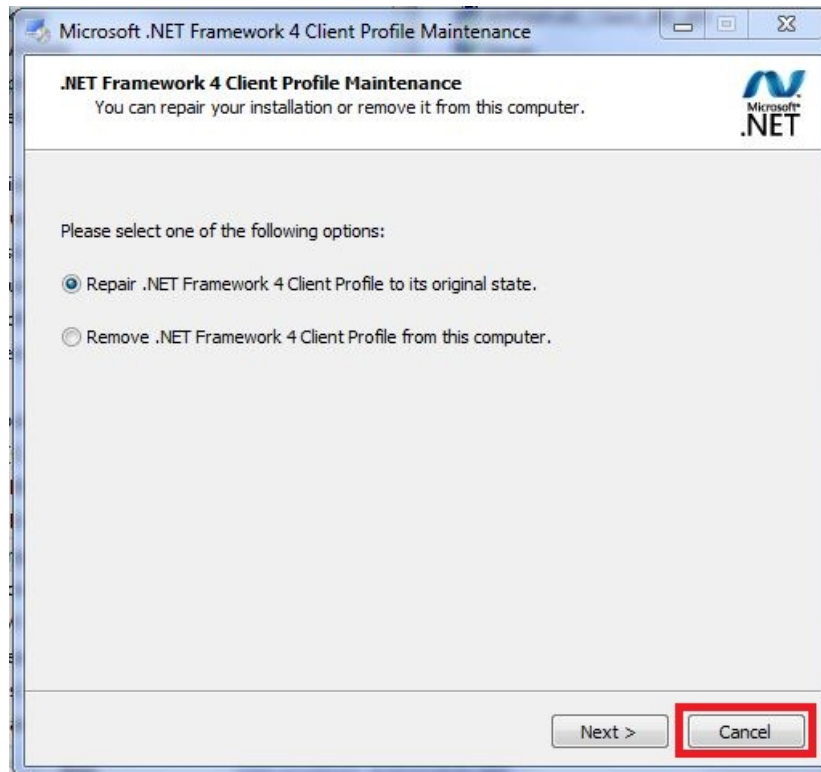
Double click on the 'Setup' file in order to begin the installation process. A command prompt window will open and the installation process will start.

The installation will be by automatically installing the necessary driver files. No action is required by the user during this part of the installation process. The command prompt and installation window that will be seen during this process are shown below for reference.

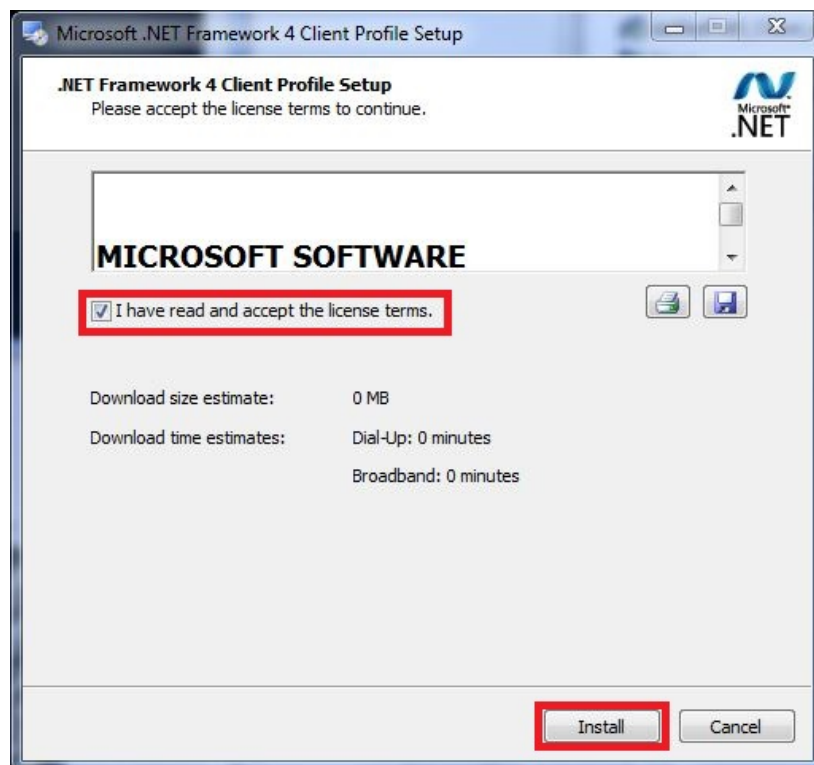


Step 2:

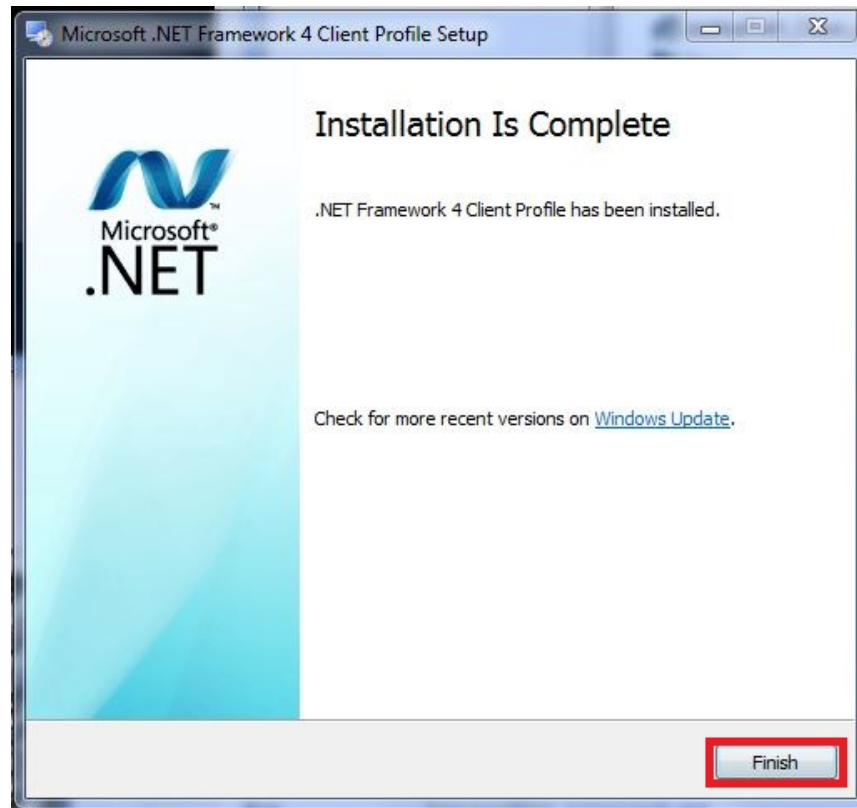
After the driver files have finished installing, the installation of the latest .NET Framework will begin automatically. The user will be prompted for action during this process. If you already have the latest .NET Framework installed, you will see the window shown in the picture below. If you get this window, simply click 'Cancel' and then click 'Yes' to confirm.



If you do not have the latest .NET Framework installed, you will receive the following window. In this case, you will need to proceed with the installation. In order to proceed with the installation, check the box to agree to the Microsoft terms and conditions and click 'Install'.

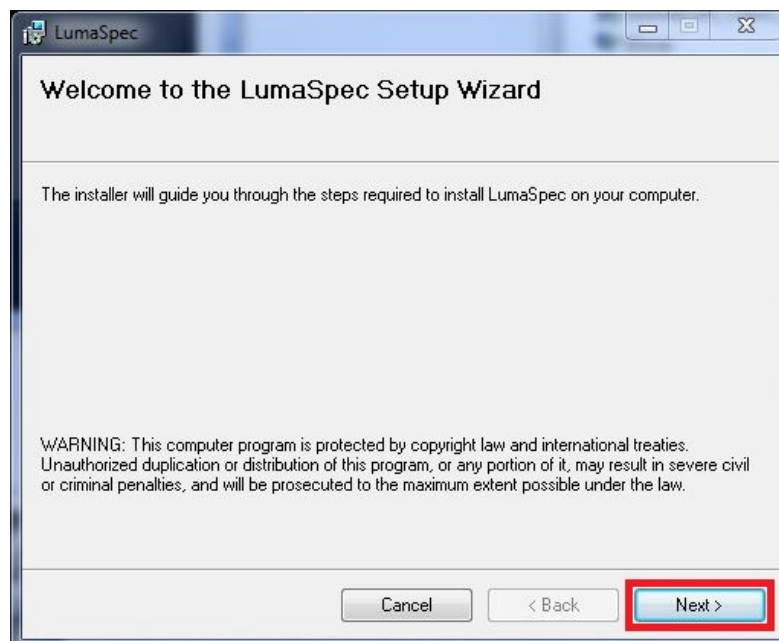


Once the installation has completed, click 'Finish'.



Step 3:

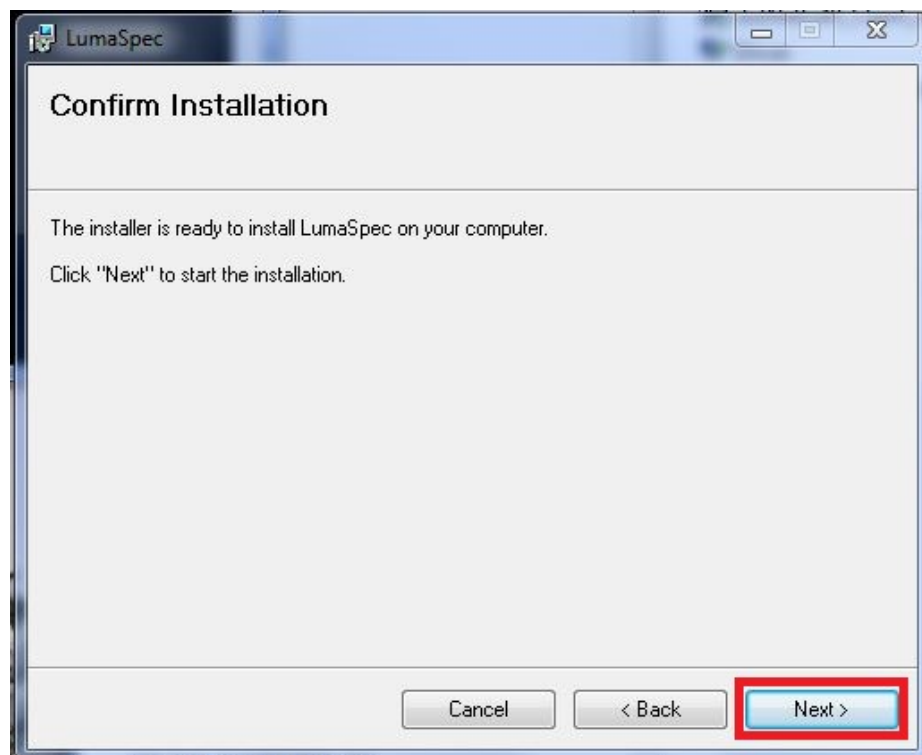
After the .NET Framework installation, the wizard for the LumaSpec software installation will open automatically. Click 'Next' on the first window that opens in order to begin the installation.



On the next window, select whether you would like to install the program for all users on the computer or just the current user by selecting 'Everyone' or 'Just Me', and then click 'Next'. In this window, you can also change the folder in which the program will be installed if you would like it to be a location other than the default. Prior recommends you do not change the default location unless it is a requirement for your system.



Click 'Next' in the confirmation window in order to begin the installation.



Once the installation has completed, click 'Close' to complete the LumaSpec software installation process.

